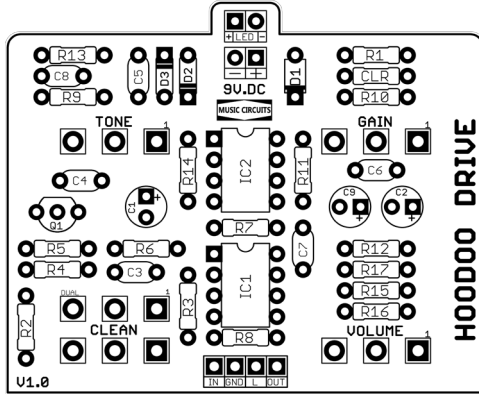


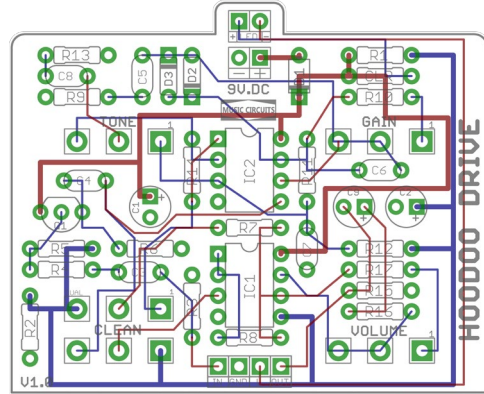


HOODOO DRIVE V1.0

Based on the VOODOO LAB® SPARKLE DRIVE
REVISION 01.09.2022



COMPONENT LAYOUT



TRACE LAYOUT

EFFECT TYPE: OVERDRIVE

BOARD DIMENSIONS

2.30 x 1.89 inches (58.4 x 48.0mm)

Fits: 125B Enclosure

Please take your time and enjoy.

This document includes:

- **Bill of Materials**
- **Schematic**
- **Drill Template**
- **Wiring Diagram**



BOM: SPARKLE DRIVE (HOODOO DRIVE)

Capacitors

C1 100uf
C2 47uf
C3 100n
C4 220n
C5 47n
C6 47p
C7 220n
C8 100n
C9 2u2

RESISTORS	
150R	1
470R	1
1k	3
3k	1
4k7	1
10k	4
13k	1
51k	1
100k	2
510k	1
1M	1

CAPACITORS	
47p	1
47n	1
100n	2
220n	2
2u2	1
47uf	1
100uf	1

Diodes

D1 1N5817
D2 1N914
D3 1N914

IC's

IC1 NE5532
IC2 JRC4558

Transistors

Q1 2N3904

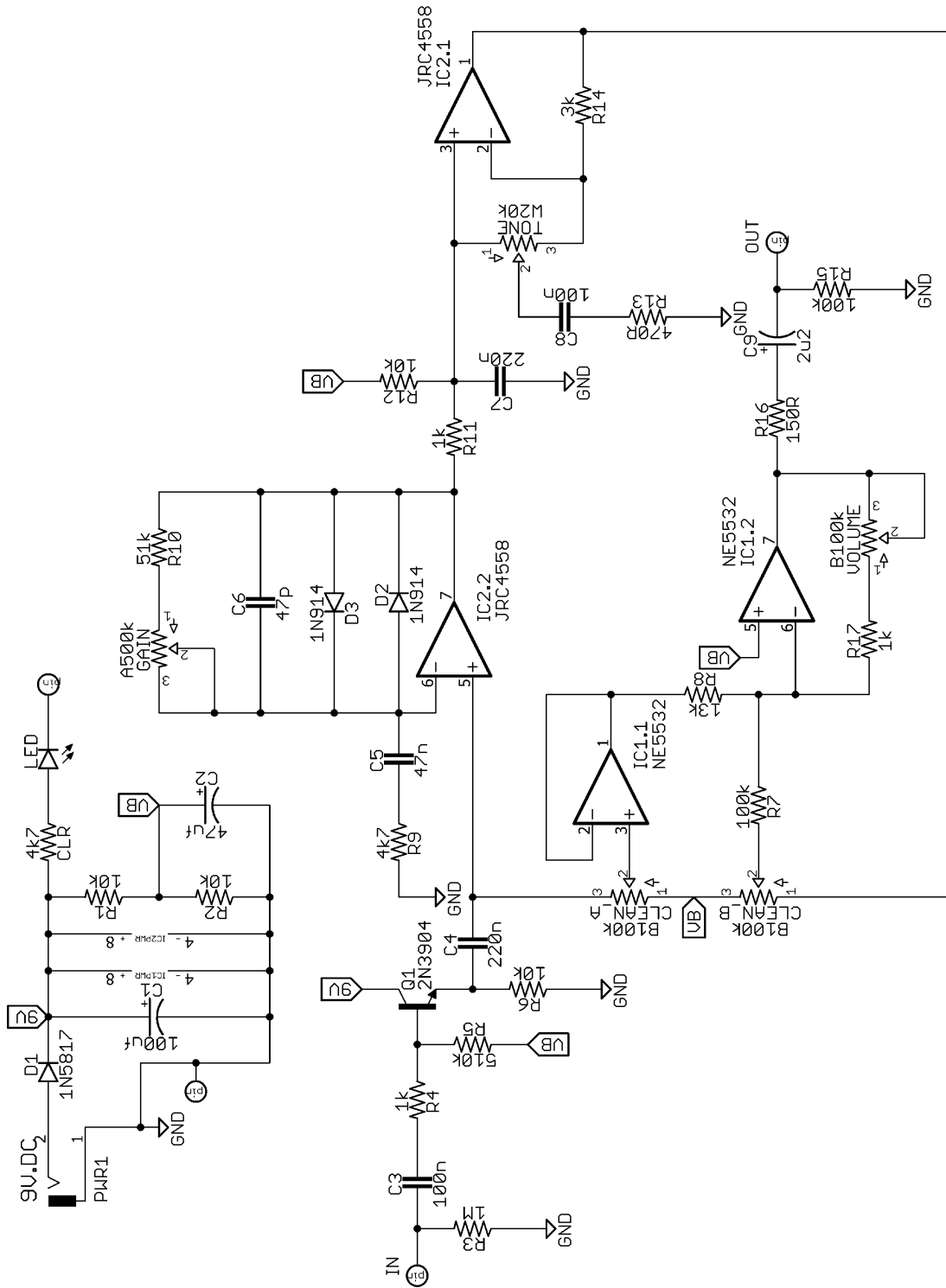
Resistors

R1 10k
R2 10k
R3 1M
R4 1k
R5 510k
R6 10k
R7 100k
R8 13k
R9 4k7
R10 51k
R11 1k
R12 10k
R13 470R
R14 3k
R15 100k
R16 150R
R17 1k
CLR 4k7

Pots

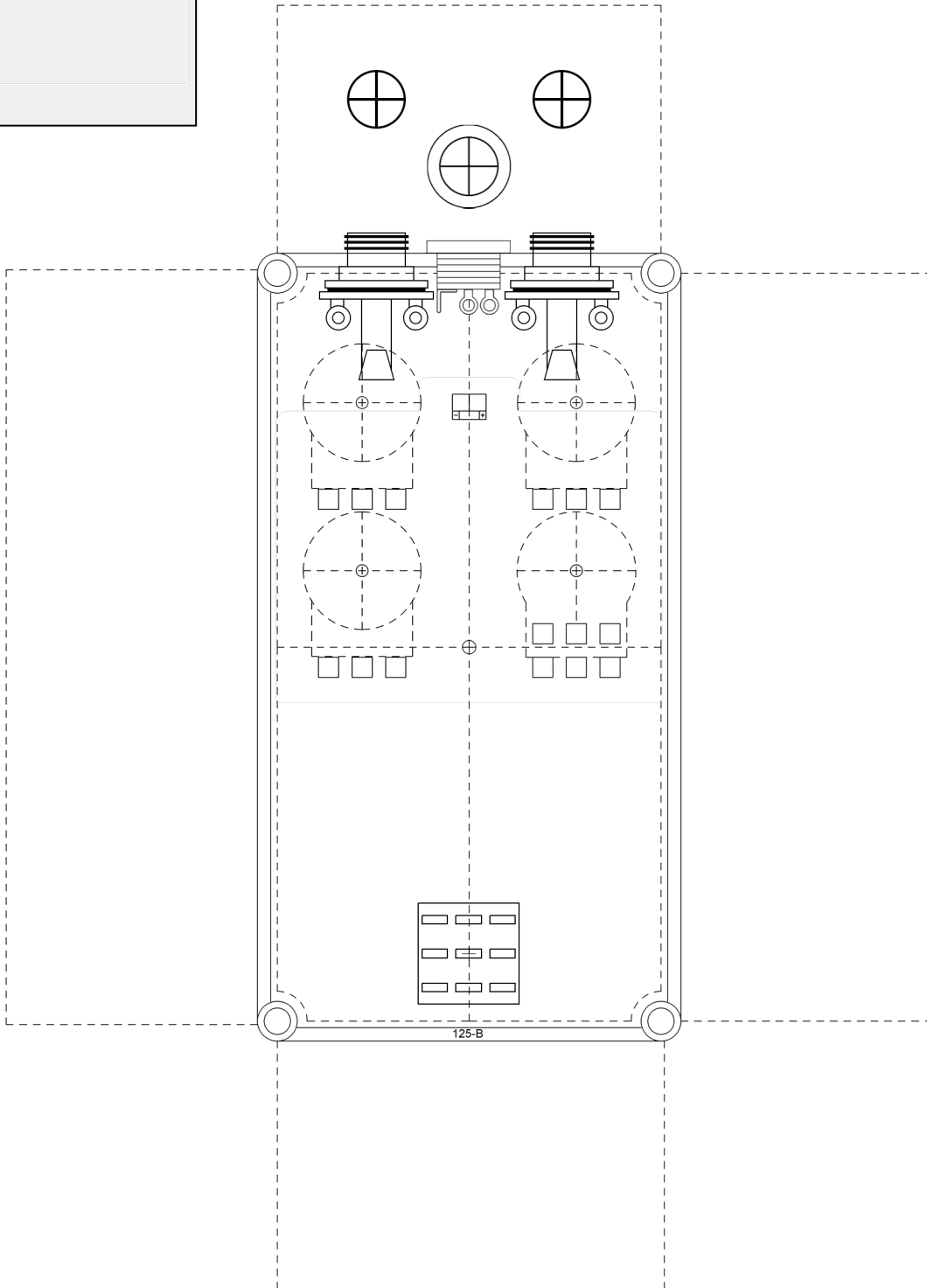
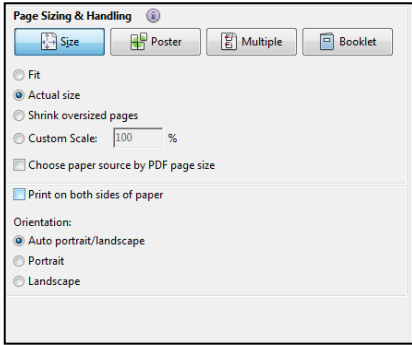
TONE W20k
VOLUME B100k
GAIN A500k
CLEAN B100k DUALGANG

SCHEMATIC



DRILL TEMPLATE

Adobe PDF: PRINT ACTUAL SIZE



WIRING IT UP

It's good to test the effect outside of the enclosure. I do sell a tester board which is perfect for this. When you're good to go, here's how to wire things up.

3PDT WIRING

