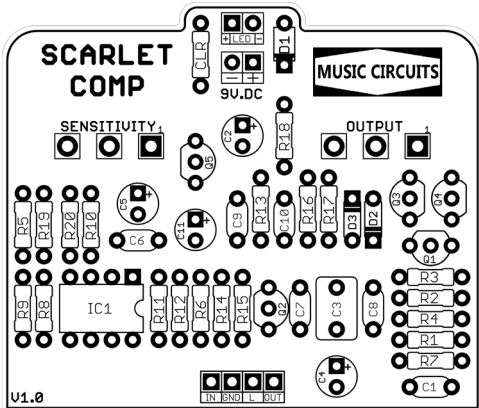


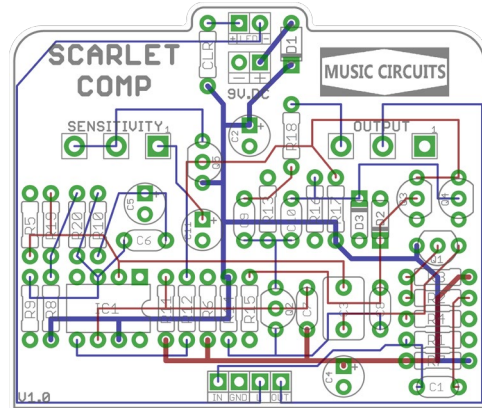


### SCARLET COMP V1.0

Based on the MXR® DYNA COMP  
REVISION 01.10.2022



**COMPONENT LAYOUT**



**TRACE LAYOUT**

### EFFECT TYPE: COMPRESSOR

### BOARD DIMENSIONS

2.30 x 1.96 inches (58.4 x 49.8mm)

Fits: 125B Enclosure

*Please take your time and enjoy.*

### This document includes:

- **Bill of Materials**
- **Schematic**
- **Drill Template**
- **Wiring Diagram**



## BOM: DYNA COMP (SCARLET COMP)

### Capacitors

C1	10n
C2	100uf
C3	1u
C4	10uf
C5	1uf
C6	10n
C7	1n
C8	10n
C9	47n
C10	10n
C11	10uf
C12	10n

RESISTORS	
1k	2
10k	5
15k	1
22k	1
27k	1
56k	1
150k	2
470k	1
1M	5
1M5	1

CAPACITORS	
1n	1
10n	5
47n	1
1u	1
1uf	1
10uf	2
100uf	1

### Diodes

D1	1N5817
D2	1N914
D3	1N914

### IC'S

IC1	CA3080
-----	--------

### Transistors

Q1	2N3904
Q2	2N3904
Q3	2N3904
Q4	2N3904
Q5	2N3904

### Resistors

R1	1M5
R2	10k
R3	1M
R4	10k
R5	1M
R6	22k
R7	56k
R8	470k
R9	1M
R10	15k
R11	150k
R12	27k
R13	10k
R14	10k
R15	1M
R16	1M
R17	150k
R18	10k
R19	1k
R20	1k

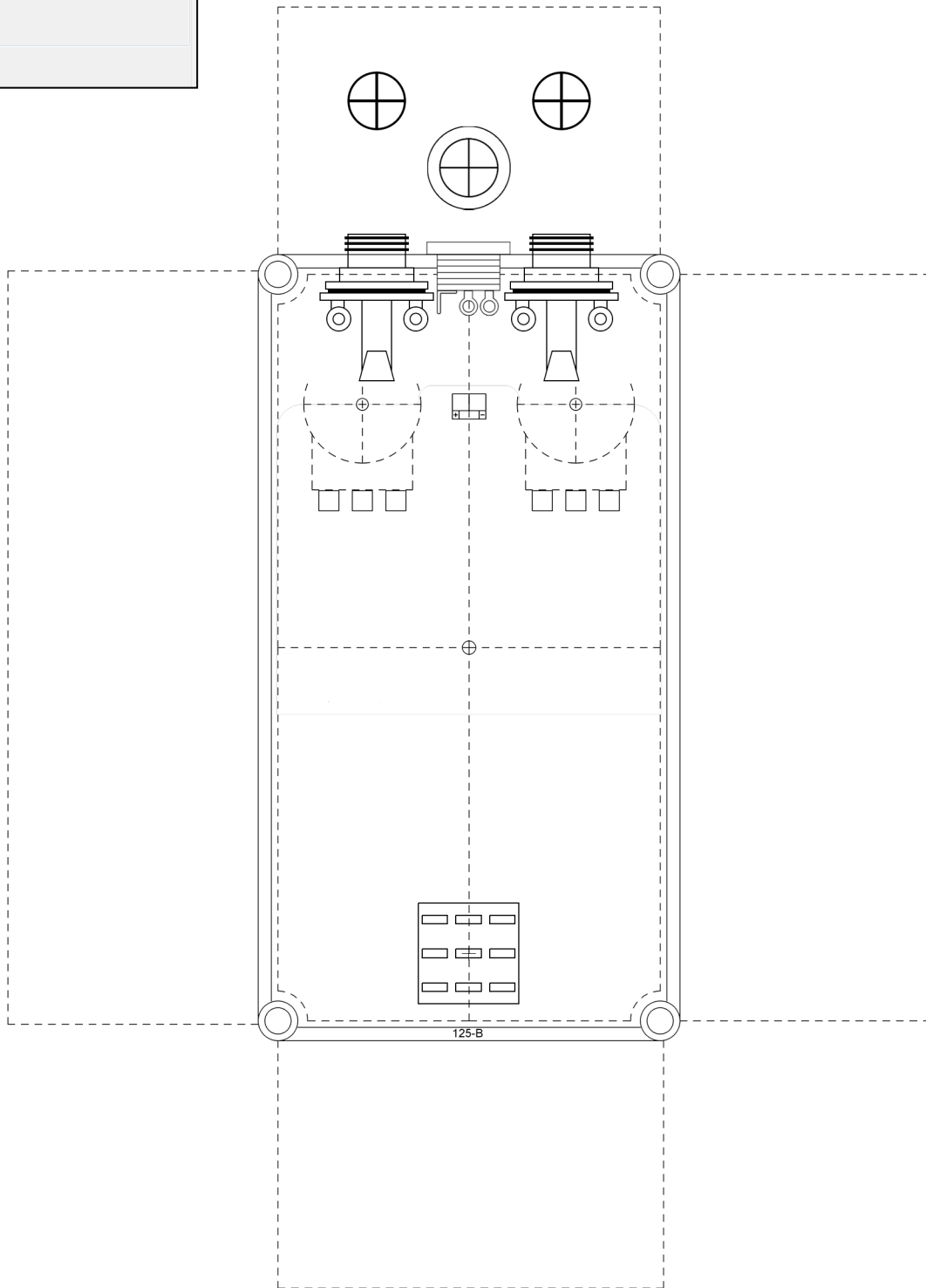
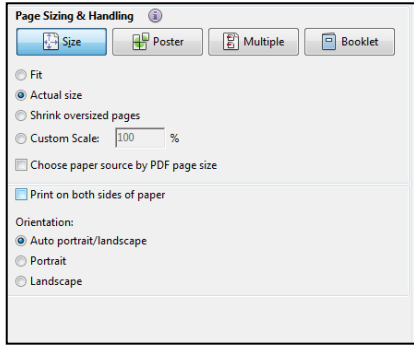
### Pots

SENSITIVITY	B500k
OUTPUT	A50k



# DRILL TEMPLATE

**Adobe PDF: PRINT ACTUAL SIZE**



## WIRING IT UP

It's good to test the effect outside of the enclosure. I do sell a tester board which is perfect for this. When your good to go, here's how to wire things up.

# 3PDT WIRING

