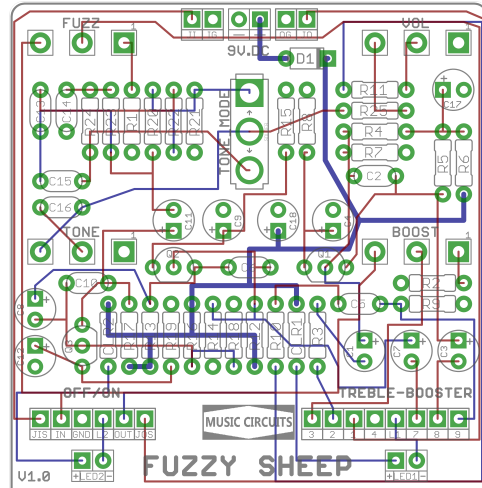
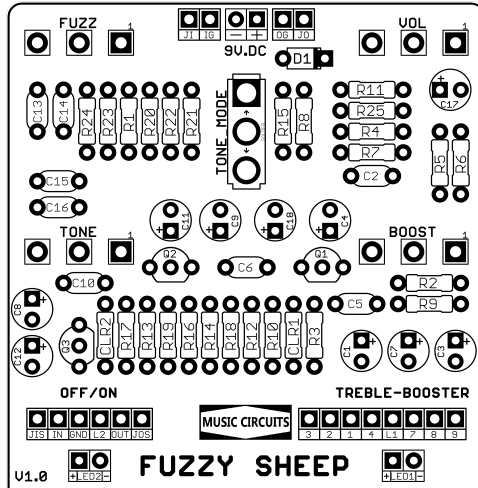


# MUSIC CIRCUITS

## FUZZY SHEEP V1.0

Based on the ROLAND® BEE BAA  
REVISION 01.09.2022



**COMPONENT LAYOUT**

**TRACE LAYOUT**

**EFFECT TYPE: FUZZ**

**BOARD DIMENSIONS**

2.30 x 2.35 inches (58.4 x 59.7mm)

Fits: 125B Enclosure

*Please take your time and enjoy.*

**This document includes:**

- **Bill of Materials**
- **Schematic**
- **Drill Template**

- **Wiring Diagram**



## **BOM: ROLAND BEE BAA (FUZZY SHEEP)**

### **Capacitors**

C1	1uf
C2	100p
C3	1uf
C4	10uf
C5	6n8
C6	4n7
C7	1uf
C8	1uf
C9	10uf
C10	4n7
C11	1uf
C12	10uf
C13	2n2
C14	100n
C15	2n2
C16	22n
C17	47uf
C18	100uf

### **Diodes**

D1	1N5817
----	--------

### **Transistors**

Q1	2N5089
Q2	2N5089
Q3	2N5089

### **Pots**

VOL	A100k
TONE	A100k
FUZZ	A100k
BOOST	A100k

### **Switches**

SPDT on-on (mode)  
Extra 3PDT for the BOOSTER

### **Resistors**

<b>RESISTORS</b>	
1k	3
1k5	2
1k8	1
10k	6
15k	2
18k	1
22k	1
33k	1
47k	3

68k	1
100k	3
220k	1

R1 1k  
 R2 10k  
 R3 1k  
 R4 100k  
 R5 10k  
 R6 1k  
 R7 18k  
 R8 1k8  
 R9 220k  
 R10 10k  
 R11 47k  
 R12 100k  
 R13 10k

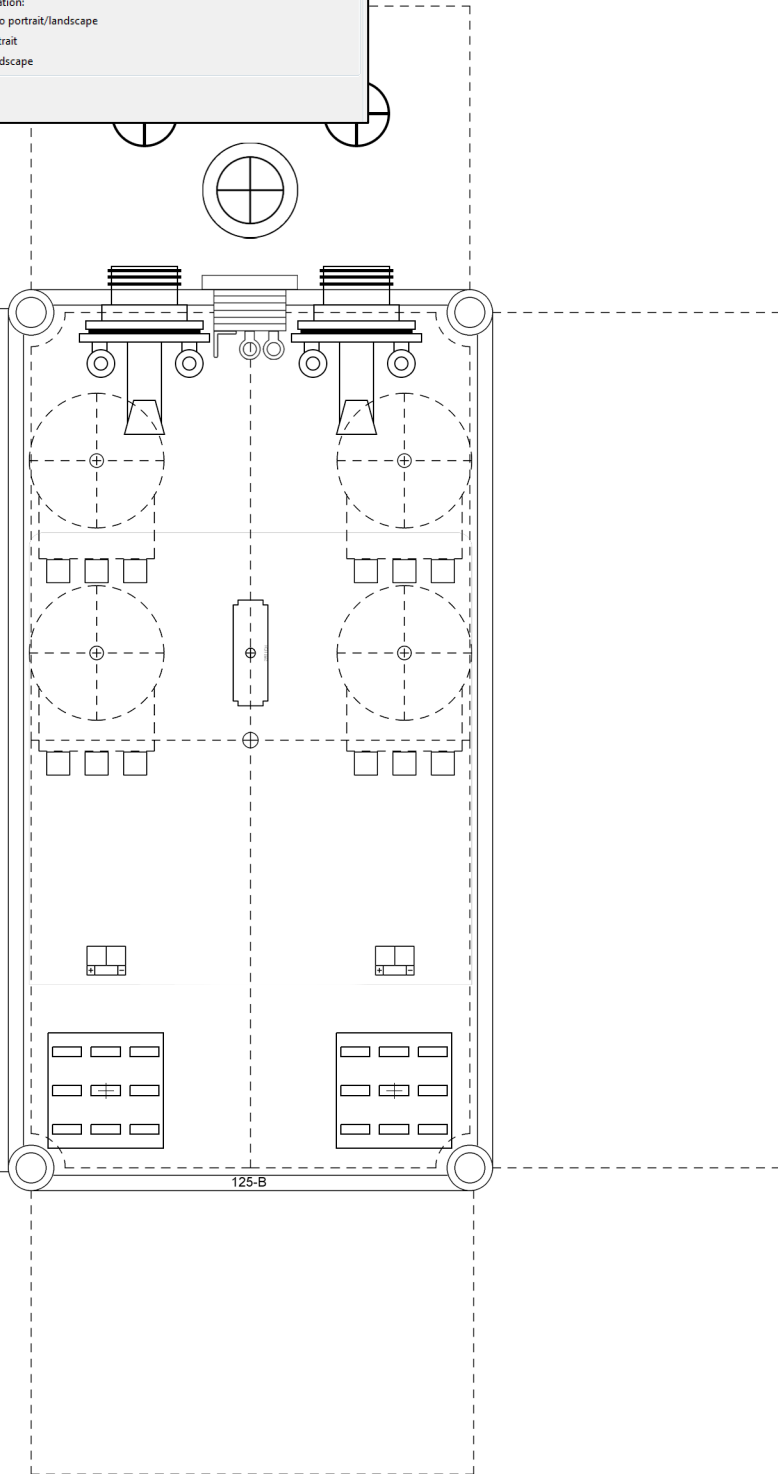
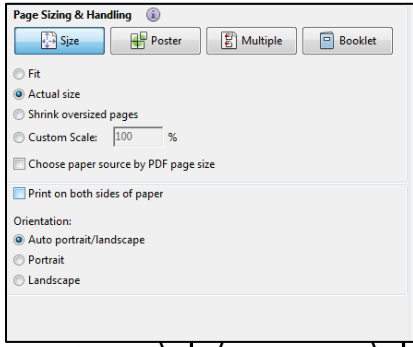
<b>CAPACITORS</b>	
100p	1
2n2	2
4n7	2
6n8	1
22n	1
100n	1
1uf	5
10uf	3
47uf	1
100uf	1

R14 15k  
 R15 1k5  
 R16 100k  
 R17 10k  
 R18 15k  
 R19 1k5  
 R20 33k  
 R21 10k  
 R22 47k  
 R23 47k  
 R24 22k  
 R25 68k  
 CLR1 4k7  
 CLR2 4k7



# DRILL TEMPLATE

Adobe PDF: PRINT ACTUAL SIZE



## WIRING IT UP

It's good to test the effect outside of the enclosure. I do sell a tester board which is perfect for this. When you're good to go, here's how to wire things up.

Wire up one side using the following diagram and wire up the fuzz/treble boost side using the numbered pads.

